



Advancing the standard of care

Helping to protect orthopedic surgery
incisions beyond the OR

Orthopedic surgery patient care doesn't end in the OR

In an increasingly overwhelmed healthcare system, healthcare providers are asked to do more with fewer resources. Combined with the increasing prevalence of comorbidities and other risk factors adds to the potential for postoperative complications beyond the operating room despite best-in-class care provided.

Postoperative complications can create a ripple effect of consequences, like disrupted healing, extended hospital stays, and poor patient outcomes. Today's complex care environment makes protecting against the ripple effect of these complications a high priority.



Recognizing the risks of orthopedic surgery

Your confidence in the OR can help give patients peace of mind. However, that confidence can be lost when your patient is discharged. At that point there can be multiple concerns, including swelling, infections and improper tissue integration. Solventum can help deliver positive outcomes for you and your patient.

Orthopedic surgery generally has a



5% mean rate of complications*¹



9.9% 30-day readmission rate for major hip and knee surgery²

Procedures with the highest reported complication rates



24-27%
Lower extremity fractures¹



8-12%
Revision hip and knee arthroplasty¹



7-11%
Spinal lumbar surgery¹



13-40%
Lower extremity amputations (wound complications)^{3,4}

The cost of surgical complications



7.7-11.7%
days increased length of hospital stay due to surgical site infections (SSIs)⁵



18.8%
of unplanned 30-day readmission following THA and TKA** due to SSI⁶



\$24,200 & \$30,300

periprosthetic joint infection complications average hospital costs after THA and TKA, respectively⁷

*Note: NSQIP data captured 5368 complications within top orthopedic procedures including minor complications (UTIs) and major complications (death)

**THA = Total hip arthroplasty; TKA = Total knee arthroplasty

Extend your control over postoperative healing

Solventum™ Prevena™ Therapy is the first closed-incision negative pressure therapy (ciNPT) solution of its kind to help reduce the risk or incidence of seromas and superficial surgical site infections (SSIs) in Class I and II wounds.* It helps protect the incision site after surgery up to 7 days — extending your control over postoperative healing and helping patients at risk of developing complications.

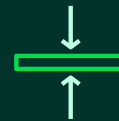
Prevena Therapy offers surgeons the confidence to help protect patients beyond the OR



Acting as a barrier to external contamination



Delivering continuous -125 mmHg up to 7 days



Helping to hold incision edges together



Decreasing lateral tension of sutured/stapled incisions⁸



Removing fluids and infectious materials**



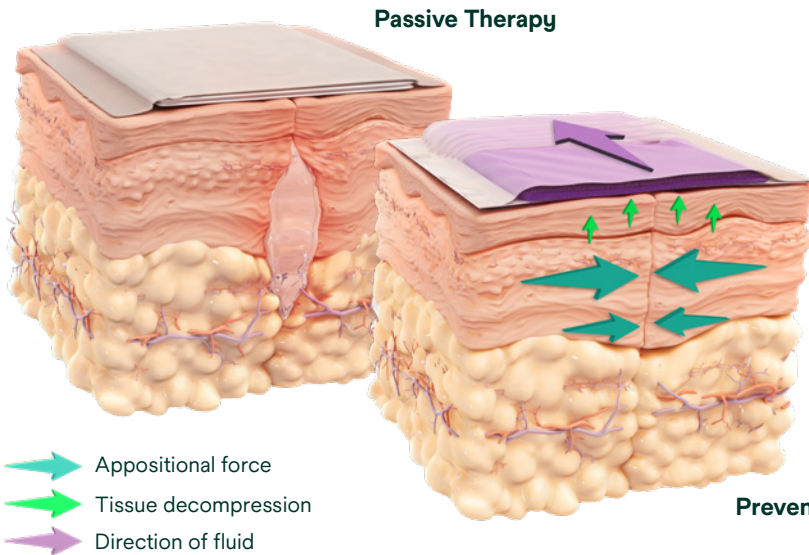
Reducing edema

*The effectiveness of Prevena Therapy in reducing the incidence of SSIs and seroma in all surgical procedures and populations has not been demonstrated. See full indications for use and limitations at eifu.solventum.com.

**In a canister.

The advanced science of Solventum™ Prevena™ Therapy

Prevena Therapy utilizes continuous -125 mmHg negative pressure therapy, reticulated open cell foam (ROCF) dressing technology, and optimized exudate management (replaceable canister) over closed incisions to help enhance healing.



Designed to help optimize postoperative care

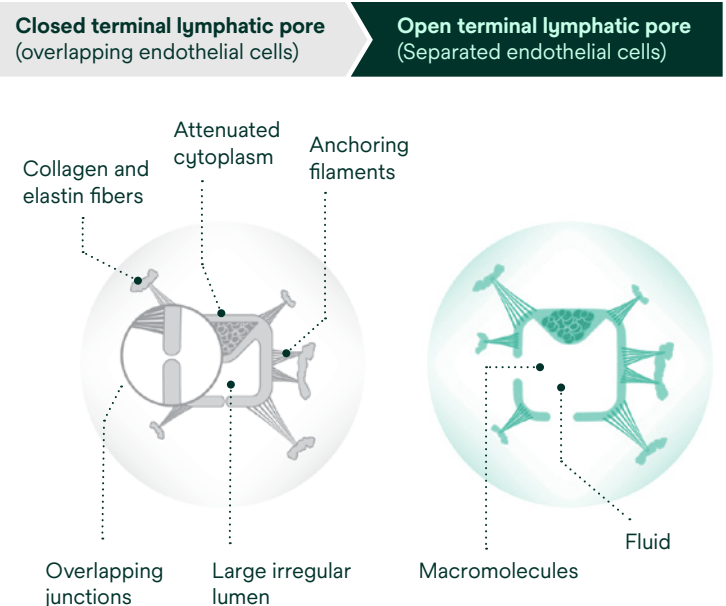
- Contours allow for even distribution of negative pressure
- Bolster and stabilize the incision and surrounding soft tissue
- Enhanced fluid management*
- Conforms to allow movement

How Prevena Therapy may help reduce postoperative edema**

The effects of negative pressure therapy applied to intact skin were evaluated using finite element analysis (FEA).⁹

Based on the analysis, it is hypothesized that negative pressure therapy on intact skin provides volumetric expansion that may help:

- Expand the tissue beneath the dressing, pulling the tissue open
- Lower local interstitial fluid pressure
- Open lymphatics to allow fluid clearance



*In a canister.

**Information contained within conducted bench and animal studies have not been evaluated by the U.S. Food & Drug Administration. Results have not been confirmed in human studies.

Patients and procedures that may benefit from Solventum™ Prevena™ Therapy

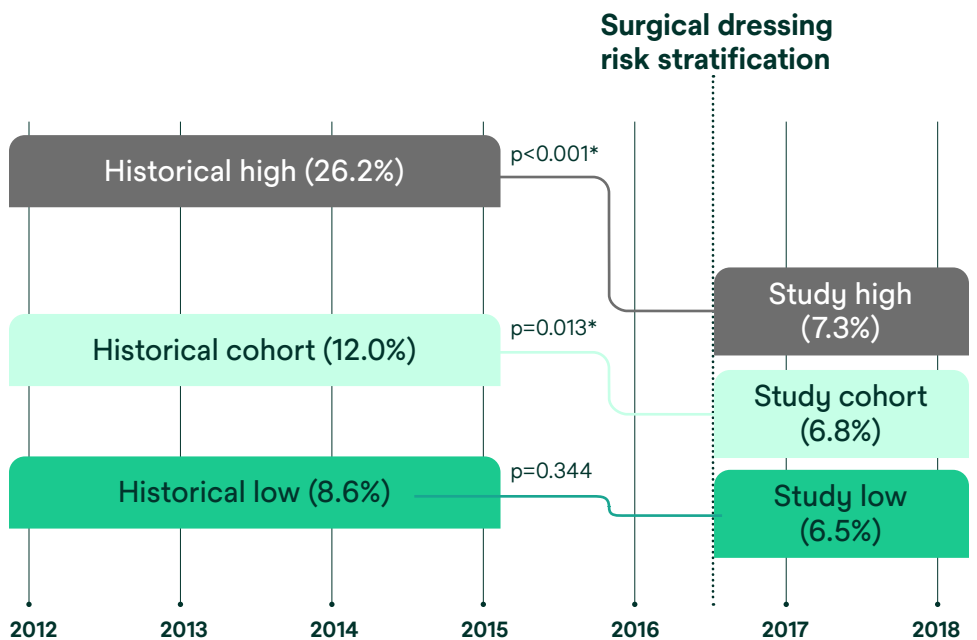
A multidisciplinary group of surgical and infectious disease experts developed an algorithm to help identify when a patient and procedure may benefit from Prevena Therapy.

The authors of a 2018 study implemented a risk-stratification algorithm (Table 1) for the use of Prevena Therapy.¹⁰ Working with patients undergoing primary total joint arthroplasties, they used the algorithm to categorize patients as high-risk (≥ 2 score) and low-risk (score < 2), and compared outcomes of patients treated prophylactically with closed-incision negative pressure therapy (ciNPT) dressings with historical control groups.

Table 1

Risk factor	Weight
Body mass index	
<18.5kg/m ²	1
18.5-29.9kg/m ²	0
30-34.9kg/m ²	1
35-39.9kg/m ²	2
>40kg/m ²	3
Diabetes mellitus	2
Immunodeficiency	1.3
Active smoker	1
Non-acetylsalicylic acid anticoagulation	1
Prior surgery	2

Table 2



High-risk patients

72% Reduction in surgical site complications**
 7.3% (9/123) Prevena Therapy vs. 26.2% (32/122) Control
 (p<0.001)***

All patients

43% Reduction in surgical site complications
 6.8% (22/323) Prevena Therapy vs. 12% (77/643) Control
 (p<.013)***

Calculation(s) are derived based on relative patient group incidence rate reported in this study.

*Percentages determined by calculating the difference between 26.2% to 7.3% and 12.0% to 6.8%, respectively.

**Surgical site complication was defined as any dehiscence, suture granuloma, drainage occurring beyond postoperative day 5, significant hematoma formation, or surgical site infection, as defined by the CDC, that required unplanned postoperative interventions.

***Statistically significant (p<0.05).

FDA indications for use

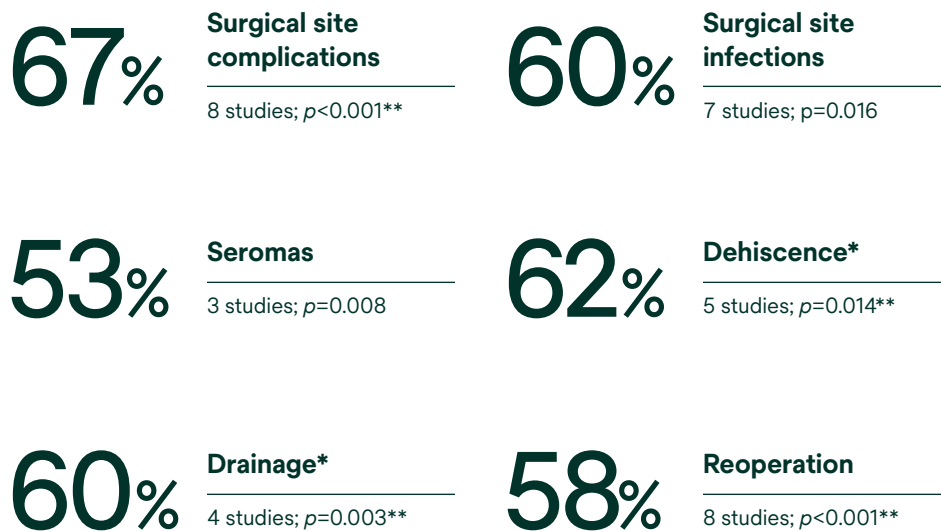
Solventum™ Prevena™ 125 Therapy Unit and Solventum™ Prevena Plus™ 125 Therapy Unit manage the environment of closed surgical incisions and remove fluid away from the surgical incision via the application of -125 mmHg continuous negative pressure. When used with legally marketed compatible dressings, Prevena 125 Therapy Unit and Prevena Plus 125 Therapy Unit are intended to aid in reducing the incidence of seroma and, in patients at high risk for post-operative infections, aid in reducing the incidence of superficial surgical site infection in Class I and Class II wounds.

Note: The effectiveness of Prevena Therapy in reducing the incidence of SSIs and seroma in all surgical procedures and populations has not been demonstrated. See full indications for use and limitations at eifu.solventum.com.

Clinical evidence supporting the use of Solventum™ Prevena™ Therapy is growing

Peer-reviewed meta-analysis of 12 studies for orthopedic joint replacement procedures demonstrated Prevena Therapy helped significantly reduce the risk of various surgical site complications (SSCs) while helping to improve health economic outcomes.¹¹

Reduced clinical complication risk



For more clinical evidence, scan the code below to visit our clinical evidence compendium.



*The use of Prevena Therapy for the reduction in the incidence of dehiscence, necrosis, and drainage has not been reviewed by the U.S. FDA.

**Statistically significant ($p < 0.05$).

Calculation(s) are derived based on the relative patient group incidence rate reported in this study.

Rethink incision management

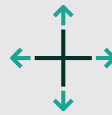
Solventum™ Prevena™ and Prevena Restor™ Dressings help protect the incision while providing even distribution of negative pressure therapy to help reduce the risk of complications, optimize the healing environment, and enhance the recovery experience.

Prevena Dressings and Prevena Restor Dressings can be applied to various procedures and anatomical locations.

Prevena Dressings

Linear coverage

Prevena Dressings help protect and manage the environment of closed surgical incisions and remove fluid away from the surgical incision via the application of continuous negative pressure



Linear coverage

Designed to manage linear, intersecting, and multiple incisions

Pre-shaped designs for peel and place application



Solventum™ Prevena™ Peel and Place Dressing, 13 cm



Solventum™ Prevena™ Peel and Place Dressing, 20 cm



Solventum™ Prevena Plus™ Peel and Place Dressing, 35 cm

Designed for flexibility and user customization



Solventum™ Prevena™ Customizable Dressing



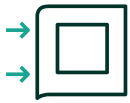
Designed to perform for you and your patients



Acts as a barrier
Designed to minimize external contamination to help reduce surgical site complications



Easy to use
A variety of peel and place dressings are available, plus customizable options



Precision designed
Dressings seamlessly conform to the patient for even distribution of negative pressure and allows for patient movement



Shower-friendly
See Prevena Therapy Patient and Clinician Guides for additional details

Solventum™ Prevena Restor™ Dressings

Area coverage

Prevena Restor Dressings offer comprehensive protection for a variety of anatomical locations. When combined with negative pressure, the dressings help provide stabilization of the incision and protect the surgical site and surrounding soft tissue.



Expanded coverage area

Designed to extend coverage and manage the surgical site and surrounding soft tissue envelope

Pre-shaped designs for peel and place application

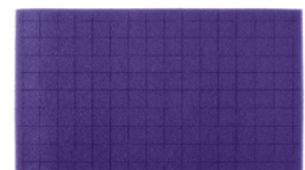


Solventum™ Prevena Restor™
AxioForm™ Dressing



Solventum™ Prevena Restor™
BellaForm™ Dressing

Designed for flexibility and user customization



Solventum™ Prevena Restor™
AdaptiForm™ Dressing



The power behind Solventum™ Prevena™ Therapy



Solventum™ Prevena Plus™ 125 Therapy Unit

One single-use negative pressure therapy unit compatible with all Solventum™ Prevena™ Dressings.

Negative pressure features

- Pre-set, continuous negative pressure therapy at -125 mmHg for up to 7 or 14 days (with dressing changes every 7 days)
- Disposable, single patient use
- Rechargeable battery

Specifications

- Dimensions: Approx 8.9 x 16.3 x 5.49cm
- Weight with empty canister: 0.64lbs (0.29kg)

Prevena Dressings are also compatible with Solventum traditional negative pressure therapy devices:

Solventum™ V.A.C.® Ultra Therapy Unit
Solventum™ ActiV.A.C.® Therapy Unit



Proactive Risk Management with Solventum™ Prevena™ Therapy

Proactive Risk Management (PRM) with Prevena Therapy provides healthcare professionals with an evidence-based, standardized approach that helps to advance the standard of care for closed incision negative pressure therapy.



Prevena.com

Prevena.com is your one-stop platform for all things Prevena Therapy. Designed with busy healthcare professionals in mind, Prevena.com provides incision management resources that help advance the standard of care.

Visit **Prevena.com** for more information.

For more information about implementing PRM in your practice, contact your Solventum representative.

Additional customer resources



Live clinical training and product support. Thousands of healthcare professionals trained annually.



Clinical and reimbursement support hotlines



Product evaluation program



Centralized, on demand clinical and technical support

Ordering information

SKU	Description	UOM
Therapy devices		
PRE4000US	Solventum™ Prevena Plus™ 125 Therapy Unit, 7-Day	Each
PRE4010	Solventum™ Prevena Plus™ 125 Therapy Unit, 14-Day	Each
Dressings		
PRE1155US	Solventum™ Prevena™ Peel and Place Dressing, 13 cm	Case of 5
PRE1055US	Solventum™ Prevena™ Peel and Place Dressing, 20 cm	Case of 5
PRE3255US	Solventum™ Prevena Plus™ Peel and Place Dressing, 35 cm	Case of 5
PRE4055US	Solventum™ Prevena Plus™ Customizable Dressing	Case of 5
PRE5255	Solventum™ Prevena Restor™ BellaForm™ Dressing, 21 cm x 19 cm	Case of 5
PRE5355	Solventum™ Prevena Restor™ BellaForm™ Dressing, 24 cm x 24 cm	Case of 5
PRE5455	Solventum™ Prevena Restor™ BellaForm™ Dressing, 29 cm x 27 cm	Case of 5
PRE5555	Solventum™ Prevena Restor™ AxioForm™ Dressing, 29 cm x 28 cm	Case of 5
PRE6055	Solventum™ Prevena Restor™ AdaptiForm™ Dressing, 49 cm x 28 cm	Case of 5
Accessories		
PRE1095	Solventum™ Prevena™ Canister, 45 mL	Case of 5
PRE4095	Solventum™ Prevena Plus™ Canister, 150 mL	Case of 5
44001674	Solventum™ Prevena Plus™ 125 Therapy Unit Power Supply (available if needed)*	Each
413628	Solventum™ V.A.C.® Therapy System Power Cord (available if needed)*	Each
Kits		
PRE1001US	Solventum™ Prevena™ Incision Management System, 20 cm	Each
PRE1101US	Solventum™ Prevena™ Incision Management System, 13 cm	Each
PRE3201US	Solventum™ Prevena Plus™ Incision Management System, 35 cm	Each
PRE4001US	Solventum™ Prevena Plus™ Customizable Incision Management System	Each
PRE1121US	Solventum™ Prevena™ Duo Incision Management System, 13 cm/13 cm	Each
PRE3321US	Solventum™ Prevena Plus™ Duo Incision Management System, 13 cm/20 cm	Each
PRE3021US	Solventum™ Prevena Plus™ Duo Incision Management System, 20 cm/20 cm	Each
PRE5221	Solventum™ Prevena Restor™ BellaForm™ Incision Management System, 21 cm x 19 cm	Each
PRE5321	Solventum™ Prevena Restor™ BellaForm™ Incision Management System, 24 cm x 22 cm	Each
PRE5421	Solventum™ Prevena Restor™ BellaForm™ Incision Management System, 29 cm x 27 cm	Each
PRE5501	Solventum™ Prevena Restor™ AxioForm™ Incision Management System, 29 cm x 28 cm	Each
PRE6001	Solventum™ Prevena Restor™ AdaptiForm™ Incision Management System, 49 cm x 28 cm	Each

*Both 44001674 and 413628 are required to recharge the Prevena Plus Therapy Unit.

See why Solventum™ Prevena™ Therapy is trusted by surgeons to help protect patients beyond the OR

For more information or to request an evaluation, contact your Solventum representative or visit [Prevena.com](https://www.Prevena.com).

Note: Specific indications, limitations, contraindications, warnings, precautions and safety information exist for these products and therapies. Please consult a clinician and product instructions for use prior to application. Rx only.

References

1. Molina CS, Thakore RV, Blumer A, Obremskey WT, Sethi MK. Use of the National Surgical Quality Improvement Program in orthopaedic surgery. *Clin Orthop Relat Res*. 2015 May;473(5):1574–81.
2. Jencks SF, Williams MV, Coleman EA. Rehospitalizations among patients in the Medicare fee-for-service program [published correction appears in *N Engl J Med*. 2011 Apr 21;364(16):1582]. *N Engl J Med*. 2009;360(14):1418-1428.
3. Jensen JS, Mandrup-Poulsen T, Krasnik M. Wound healing complications following major amputations of the lower limb. *Prosthetics and Orthotics International*. 1982;6(2):105-107
4. Morisaki K, Yamaoka T, Iwasa K. Risk factors for wound complications and 30-day mortality after major lower limb amputations in patients with peripheral arterial disease. *Vascular*. 2018;26(1):12-17.
5. de Lissovoy G, Fraeman K, Hutchins V, et al. Surgical site infection: incidence and impact on hospital utilization and treatment costs. *Am J Infect Control*. 2009;37(5):387-97.
6. Merkow R, et al. Underlying reasons associated with hospital readmission following surgery in the US. *JAMA*. 2015;313(5):483-95.
7. Kurtz SM, Lau E, Watson H, et al. Economic burden of periprosthetic joint infection in the United States. *J Arthroplasty*. 2012;27(8 Suppl):61-5.e1. Epub 2012 May 2.
8. Wilkes RP, Kilpadi DV, Zhao Y, et al. Closed Incision Management With Negative Pressure Wound Therapy (CIM): Biomechanics. *Surgical Innovation*. 2012;19(1):67-75.
9. Haridas B, Kieswetter K, Haggerty M. Test Report: Negative Pressure Therapy on Intact Skin: Poroelastic Finite Element Modeling of Interstitial Fluid Pressures. DOC-0000049240 Rev A, 1-13. 6-27-2019. San Antonio, TX, KCI. Ref Type: Report.
10. Anatone AJ, Shah RP, Jennings EL, et al. A risk-stratification algorithm to reduce superficial surgical site complications in primary hip and knee arthroplasty. *Arthroplasty Today*. 2018;4(4):493-498.
11. Cooper HJ, Silverman RP, Collinsworth A, Bongards C, Griffin L. Closed Incision Negative Pressure Therapy vs Standard of Care Over Closed Knee and Hip Arthroplasty Surgical Incisions in the Reduction of Surgical Site Complications: A Systematic Review and Meta-analysis of Comparative Studies. *Arthroplasty Today*. 2023;21:101120. Published 2023 Apr 3.



Solventum Advanced Wound Care

12930 IH10 W
San Antonio, TX 78249
USA

Phone 800-275-4524

Web [Solventum.com](https://www.Solventum.com)

© Solventum 2025. Solventum, the S logo, Prevena, and other trademarks are trademarks of Solventum or its affiliates. 3M, the 3M logo are trademarks of 3M. Other trademarks are the property of their respective owners.

70-2013-1638-0